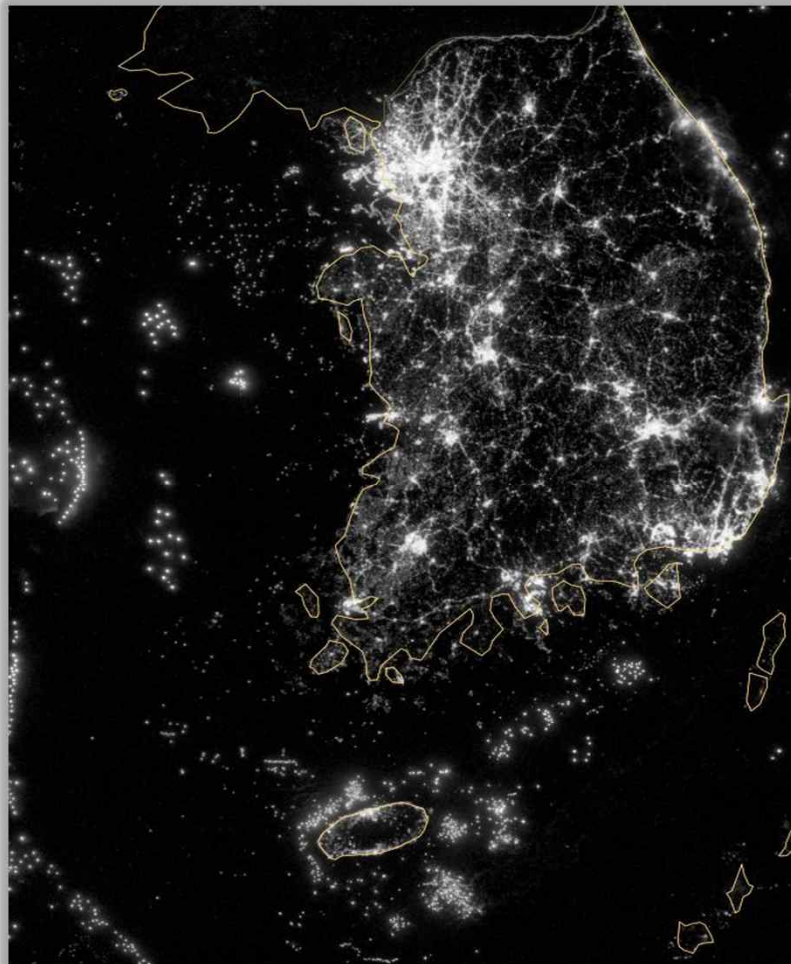


Why is One Less Nuclear Power Plant?



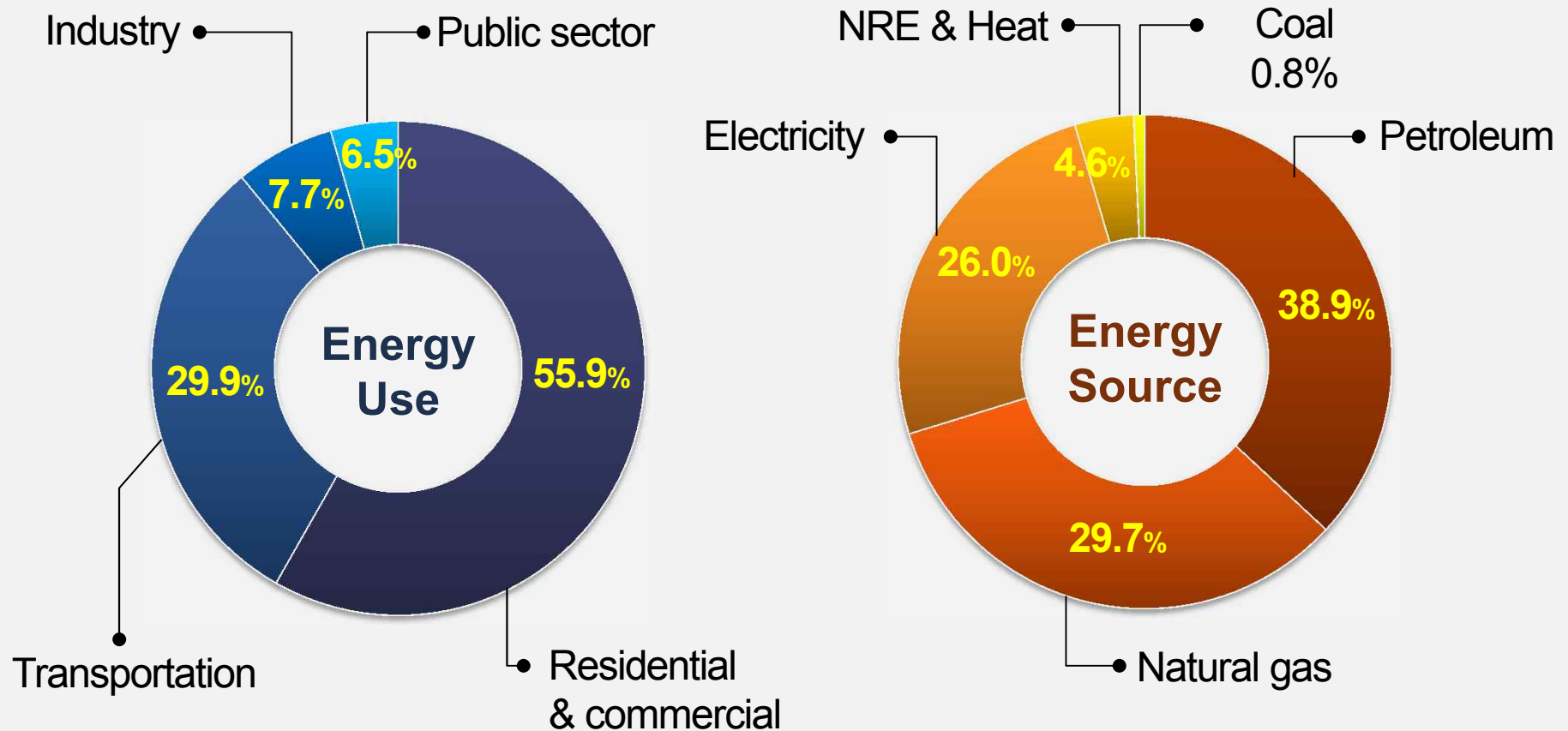
Seoul of 2012, an energy-guzzling city



Satellite photo around the Korean peninsula at night (2012.9, from NASA)
(<http://earthobservatory.nasa.gov/>)

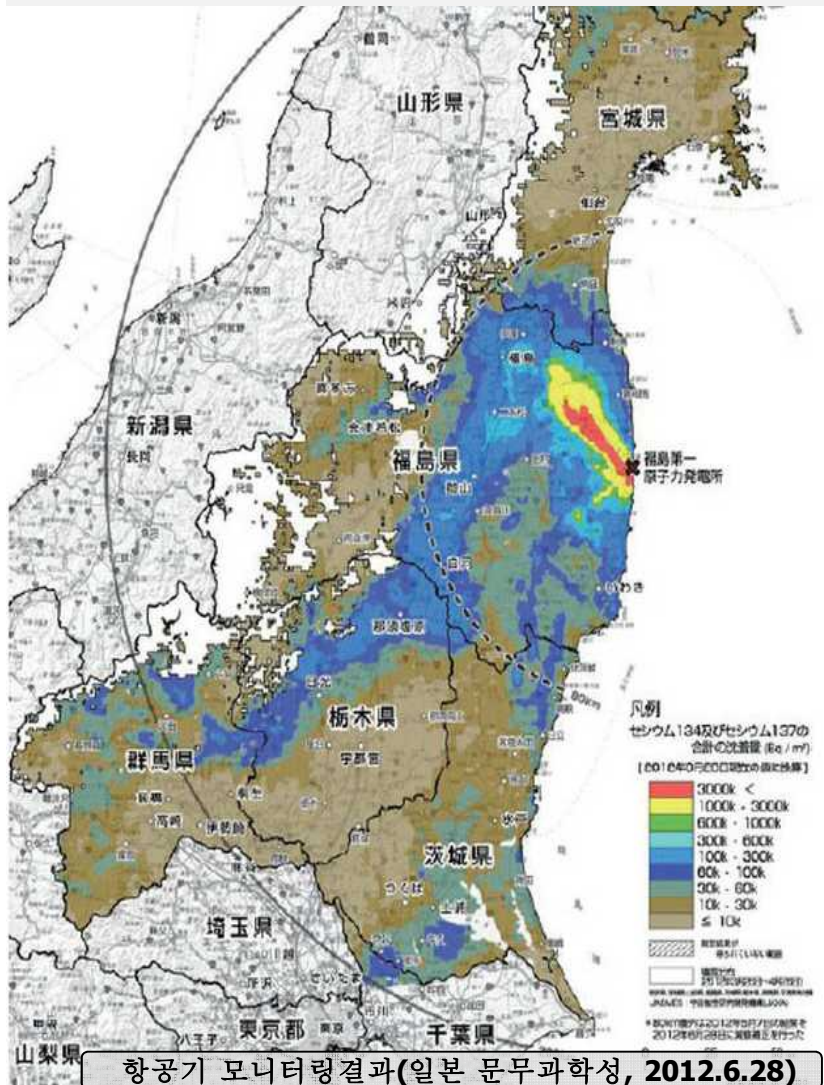
Energy consumption : 15 million TOE

“ 7.5% of energy consumption in nationwide ”

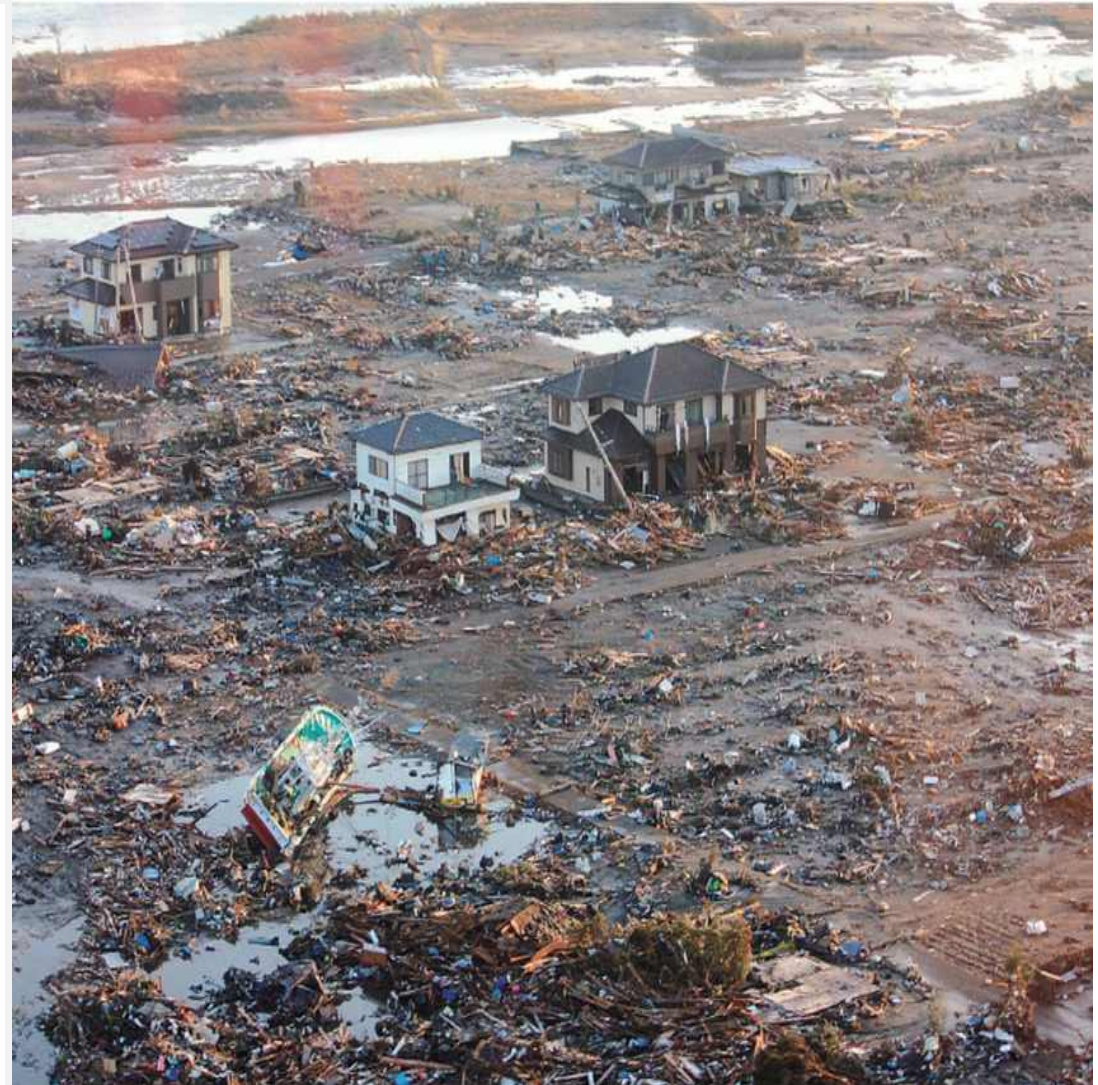


Sept. 15th, 2011, Seoul, Rolling Black-Out

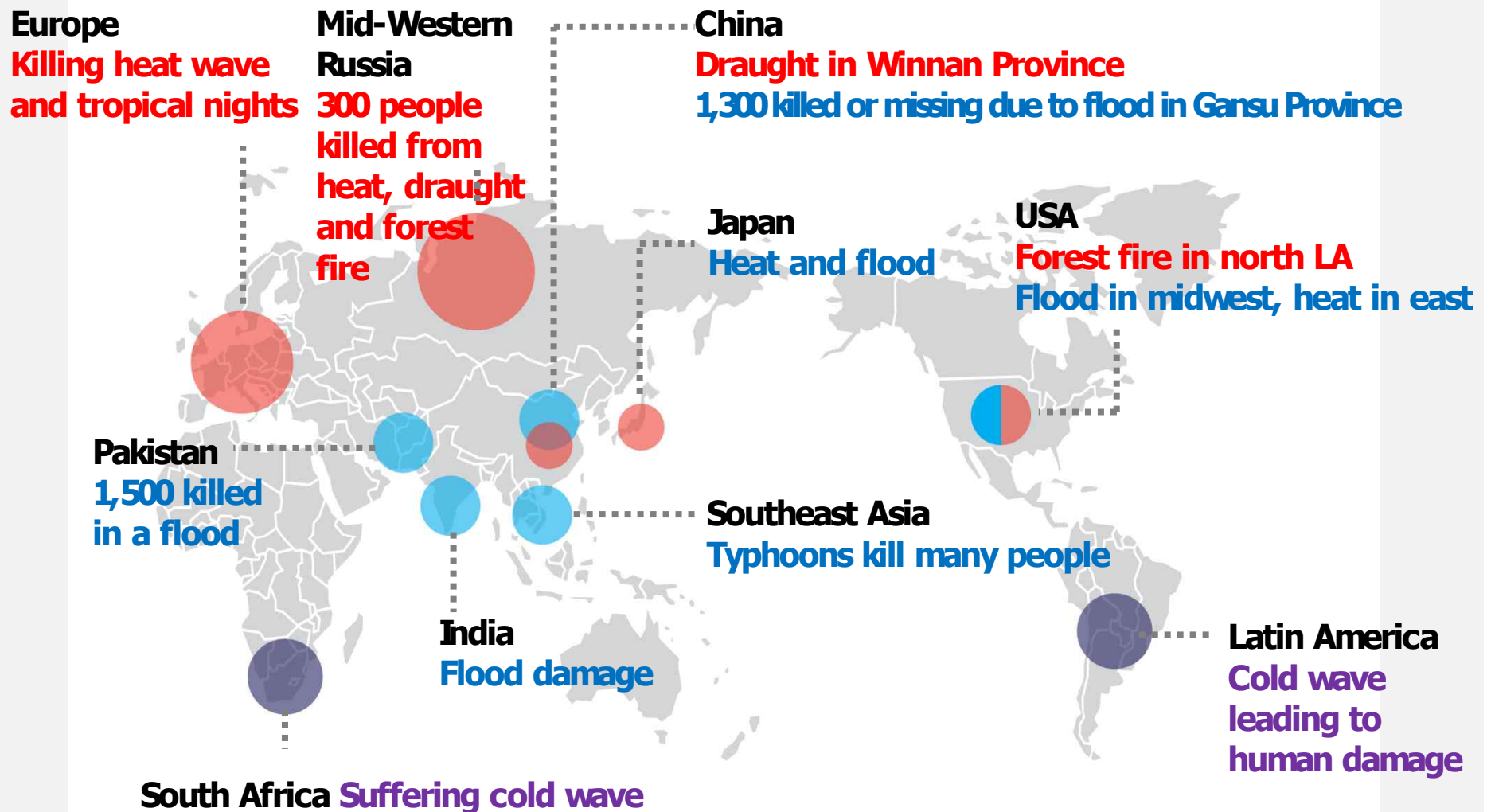
Fukushima, Japan., Mar. 2011



항공기 모니터링 결과(일본 문무과학성, 2012.6.28)



The Earth Suffering from Extreme Weather Events





**Expert
advisory
meeting**



**Grand
Public
debate**



**Public
opinion
listening
workshops**



Surveys



One Less Nuclear Power Plant means_

“Energy initiative of Seoul to save 2 million TOE equivalent to capacity of one nuclear unit for the future generation”







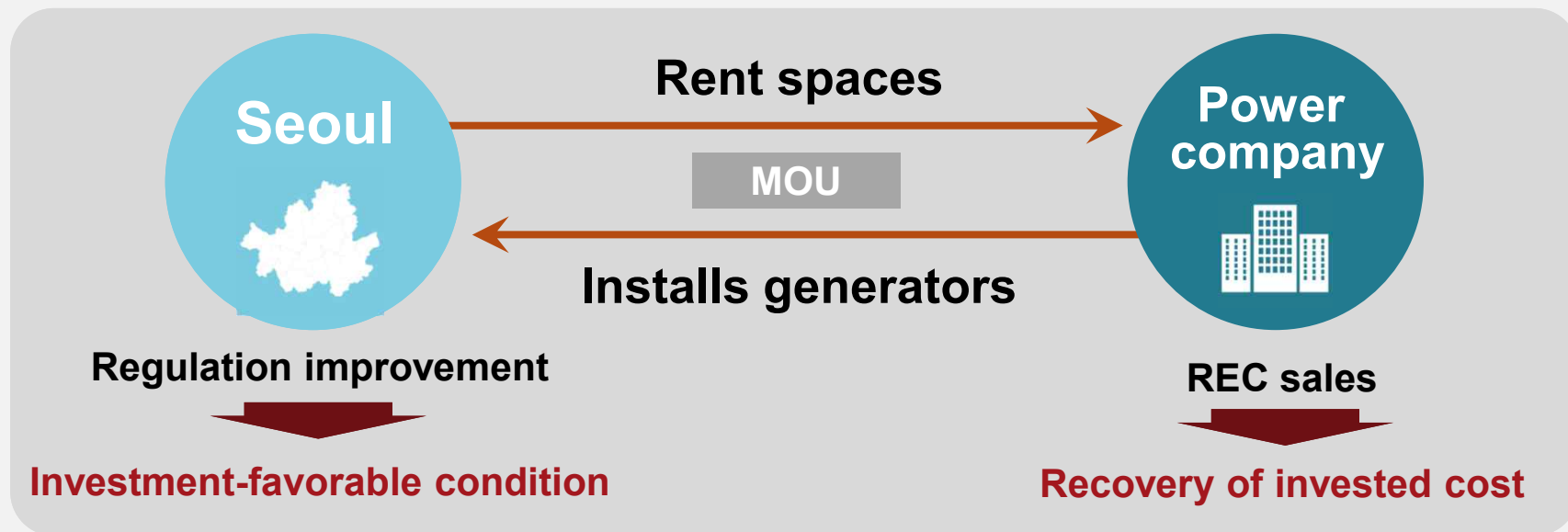
New & Renewable Energy production

PV plant

Hydro Fuel Cells

Heating Energy

- Citizens' PV plant : 300 MW by 2014
- Budget : 900 million USD





[Amsa Arisu Water Purification Center, 5MW, Completed '13.7.30]



[Guui Station, 100kW,
Completion '13.6.30]



[Sangaksan High School, 20kW,
Completion '13.6.14]



[Mini Solar generator, 50W]



New & Renewable Energy production

PV plant

Hydro Fuel Cells

Heating Energy



[SH District Energy Site
Sanggye area: 2.8MW]



[Children's Grand Park: 100kW]

○ Hydro Fuel Cell power plants :
230 MW by 2014

- Maintain operation of core urban
infrastructure in emergency : 220 MW

Subway car
depots
100 MW

Sewage Treatment
Facilities
80 MW

Park etc
40 MW

- Lay the groundwork for buildings' energy
self-sufficiency: 10 MW



New & Renewable Energy production

PV plant

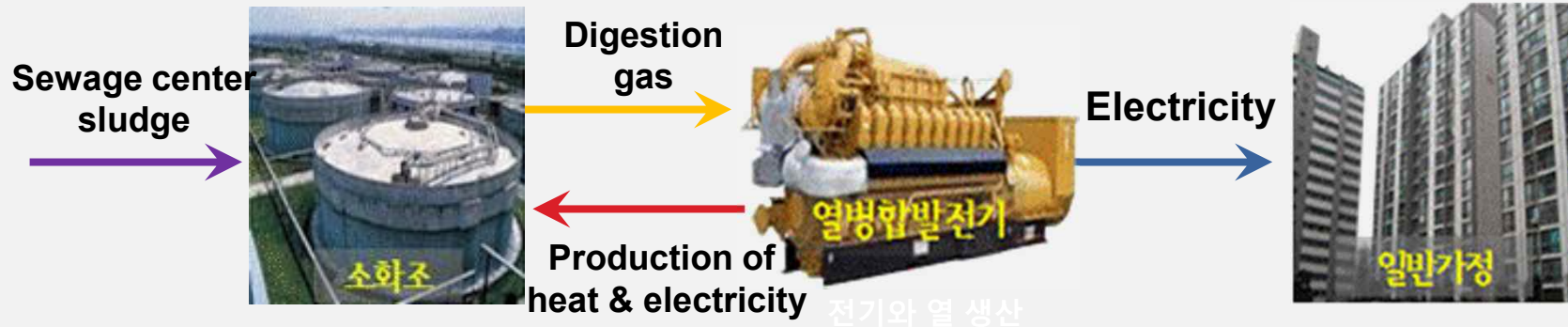
Hydro Fuel Cells

Heating Energy

District heating by waste water heat
30,000 TOE
by 2014

Co-generation using biogas
50,000 MWh
by 2014

Use of incineration heat and power generation heat
830,000 Gcal
by 2014



[The scheme of Co-generation using biogas]



Energy efficiency improvement

Building

LED

Transportation

Existing
Buildings

Building Retrofit Program



- **Financial support**

- Interest rate : 2%
- Fund: KRW 2 billion max.

New
Buildings

Energy consumption cap



- **Tax Reduction**

- **Financial support**



Energy efficiency improvement

Building

LED

Transportation





Energy efficiency improvement

Building

LED

Transportation





Energy-saving citizen lifestyle

Eco-mileage



Energy Guardian Angels



Energy-Saving Model Shops

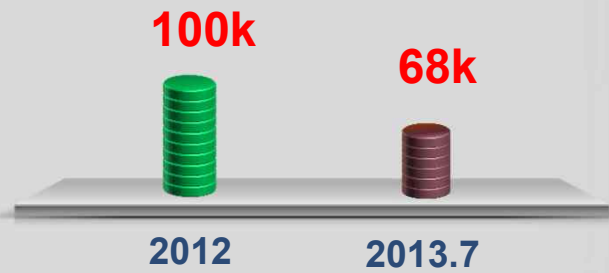


Eco-Mileage

- Membership (members)



- Energy saving (TOE)



Eco-Mileage, win '2013 UN Public Service Awards'

- Eco-Mileage won the 2nd place in “Fostering Participation in public policy decision making” category (6.23).
- Recognition of voluntary citizen participation in reducing 122k TOE energy & 355k tCO₂ emissions in 2012



“Happy Light-off Hour” by NGOs

- **Seoul Citizens**

- Light-off hour on the 22nd of every month for one hour (20:00~21:00)

- **Companies**

- Leave work at 19:00 once a week

- **Shops**

- Weekly candle café over 1 hour (winter)



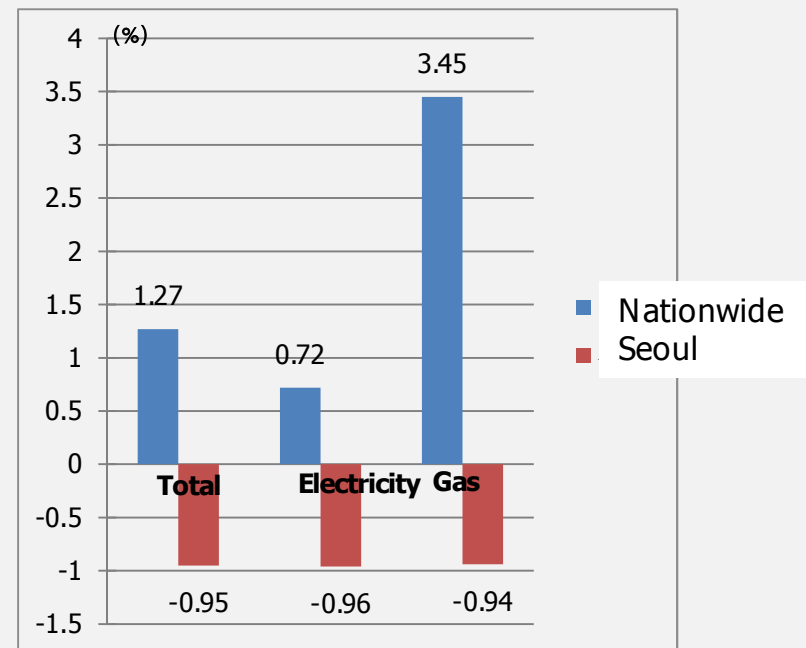
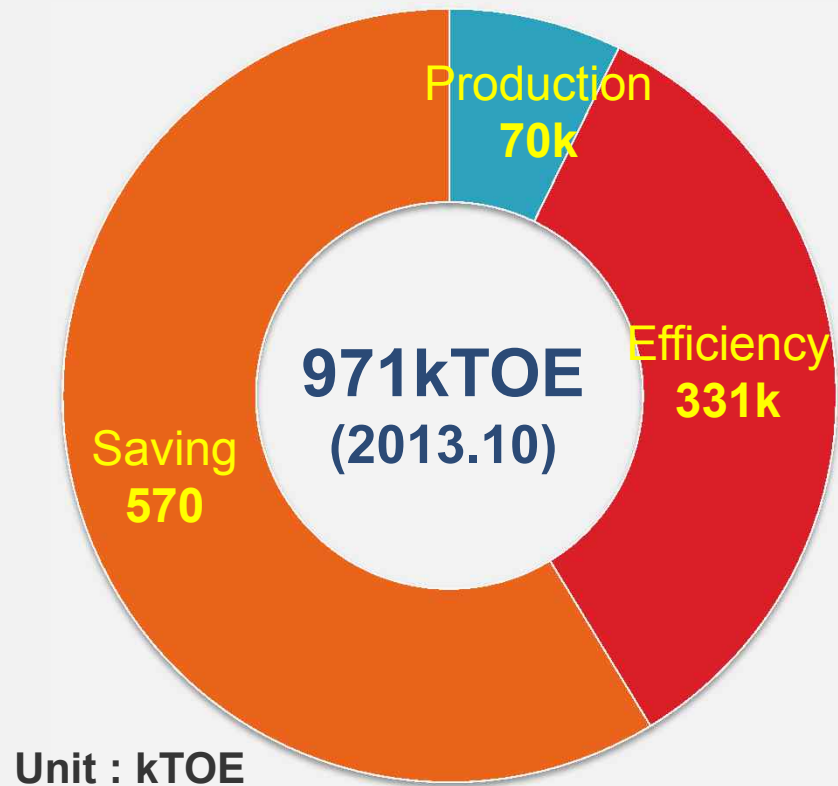
Involving Religious Groups in Energy Saving

- Energy saving model developed by MOU with Christian Community
- Energy audit pilot for catholic churches



One Less Nuclear Power Plant: Progress

- Saved 971k TOE by October 2013
 - Electricity and city gas consumption down by 1% year-on-year while national total up by 1.3%



A large group of children, many in blue uniforms, are cheering with their hands raised. The image is overlaid with a semi-transparent blue rectangle containing text.

One Less Nuclear Power Plant!

“A beautiful investment
for the future generation”