

Joint activity in Dauria (Russia, Mongolia, China)



Oleg Goroshko

***Dauria International Russian-
Chinese-Mongolian Protected
Area (DIPA)***

oleggoroshko@mail.ru

The Baikal
Lake

Dauria



The Dauria International Russian-Chinese-Mongolian Protected Area (DIPA)



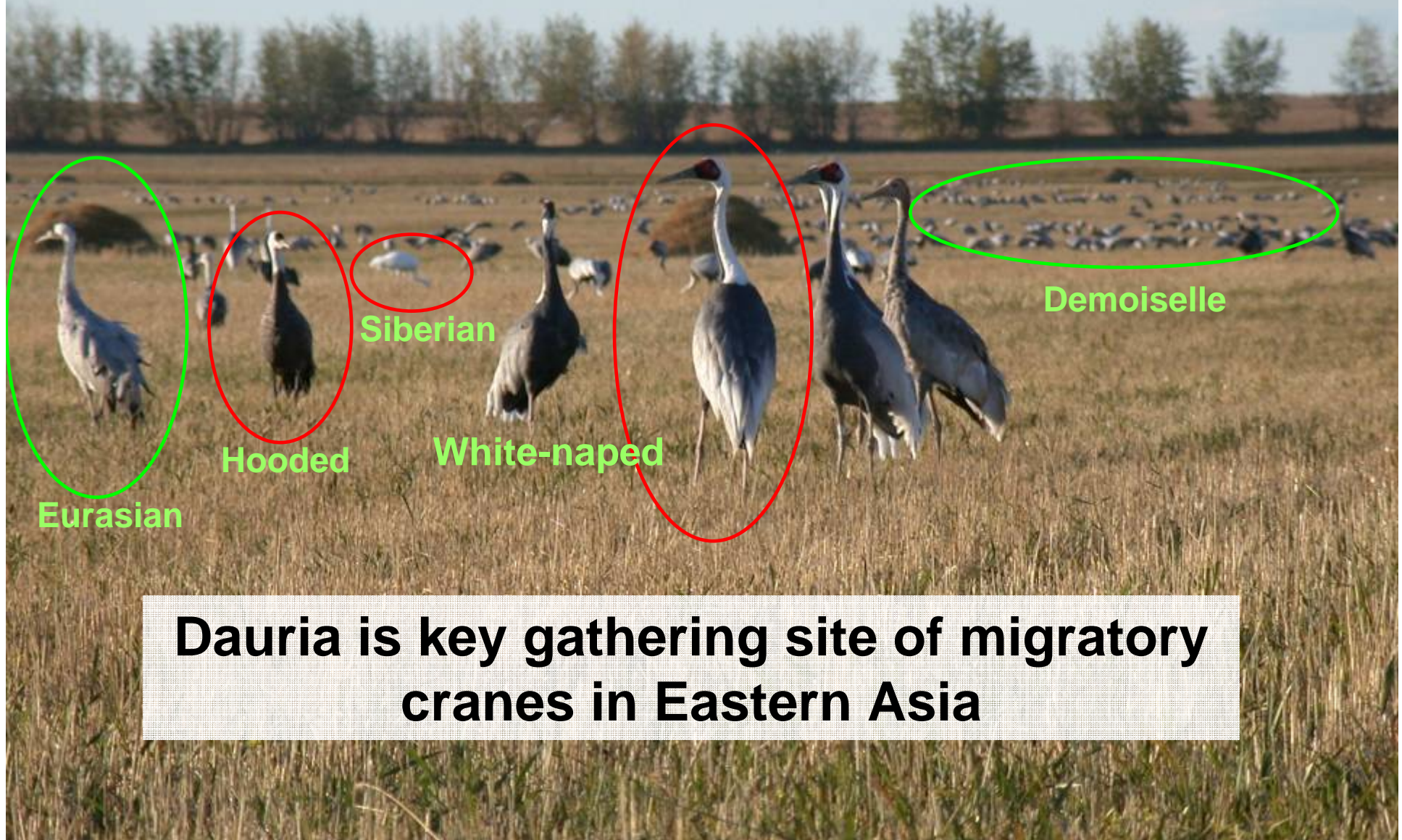


DIPA is:

- 1. Ramsar Site**
- 2. Biosphere Reserve (MAB)**
- 3. IBA**
- 4. Key site of the EAAFP (for cranes, shorebirds, ducks and geese)**
- 5. In process nomination to the World Heritage list**

6 species of cranes inhabited in Dauria.

4 of them are globally threatened (IUCN Red List)



Dauria is key gathering site of migratory cranes in Eastern Asia



Crop fields located around the Daursky NR attract during autumn about 30,000 staging cranes



Cranes make significant damage to crop (up to 70% at some wheat fields)

Local people illegally shoot cranes for crop protection. Local people angry to Nature Reserve.



Wetlands

Roosting site

Lure field

Crop field

**We studied
problem,
proposed and
tested some
methods to
reduce the crop
damage.**

**For example - lure
fields The lure fields
should be located
between roosting site
and crop fields.**

**Lure fields as long and
narrow bands are
preferable.**

**Lure fields can be small
(about 5-10 ha).**

Farmers successfully use the recommendations.

Results:

- 1. illegal shooting was significantly reduced;**
- 2. we established good cooperation with local community;**
- 3. it helps much for conservation cranes in the Nature Reserve and around the Reserve.**



Photo of Yury Darman

Torey Lakes



**Dauria
is great
wetland
network**

**About
1,000 small
unprotected
wetlands
located
around the
DIPA.**

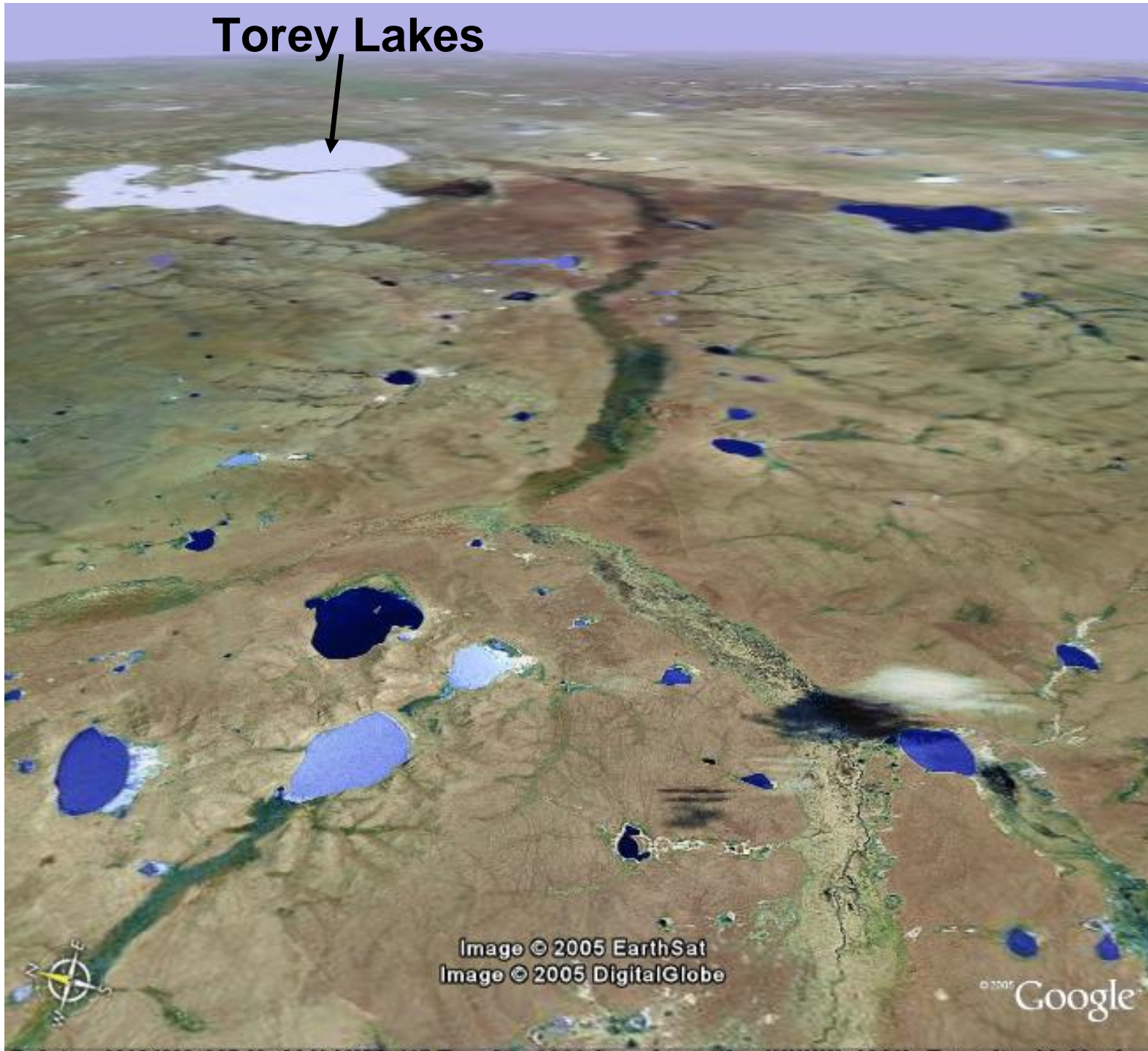
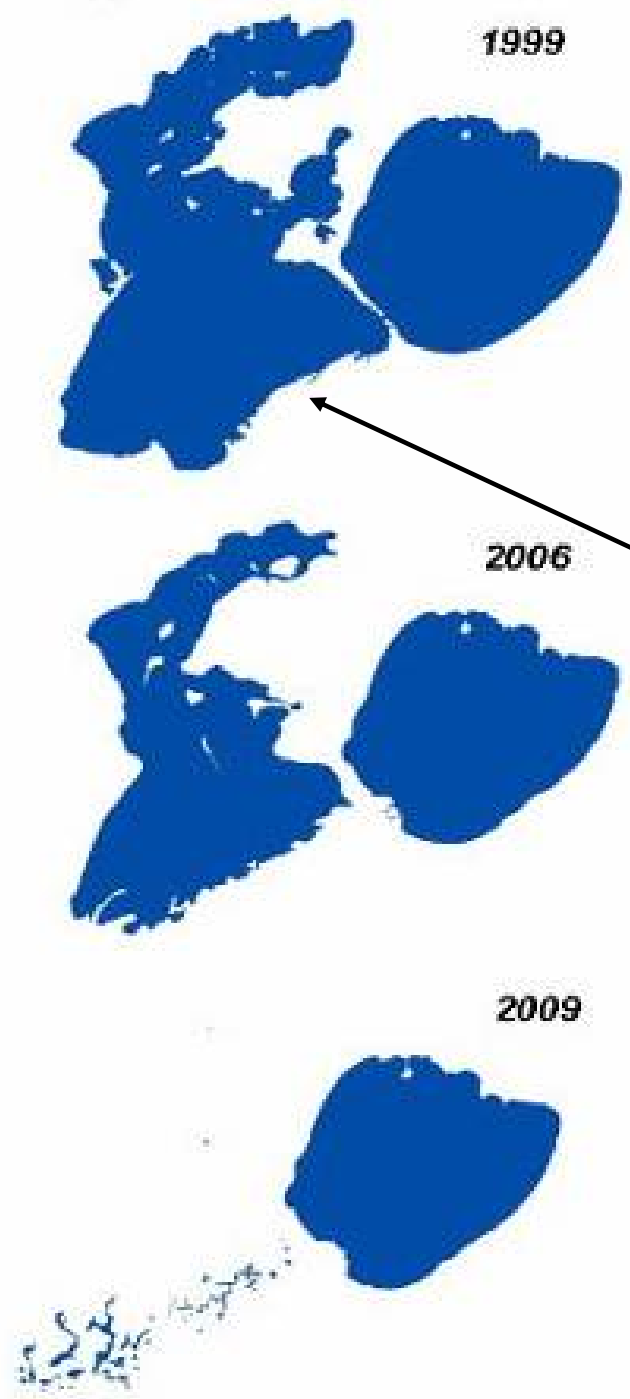
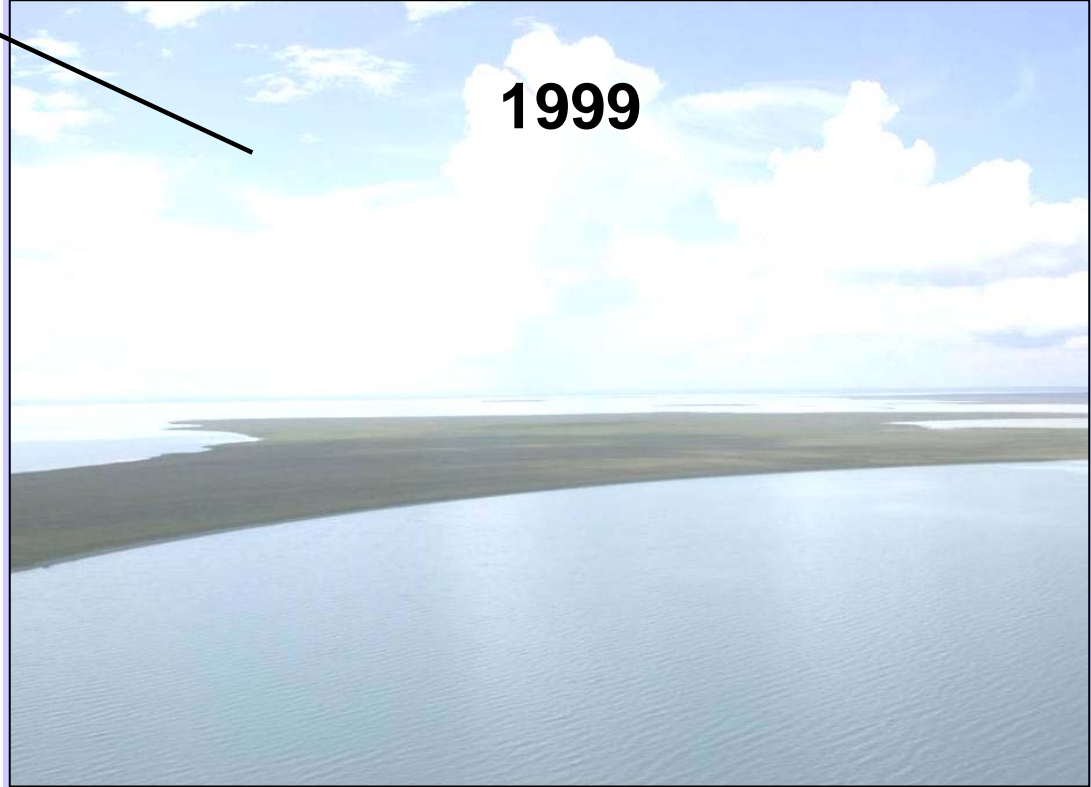


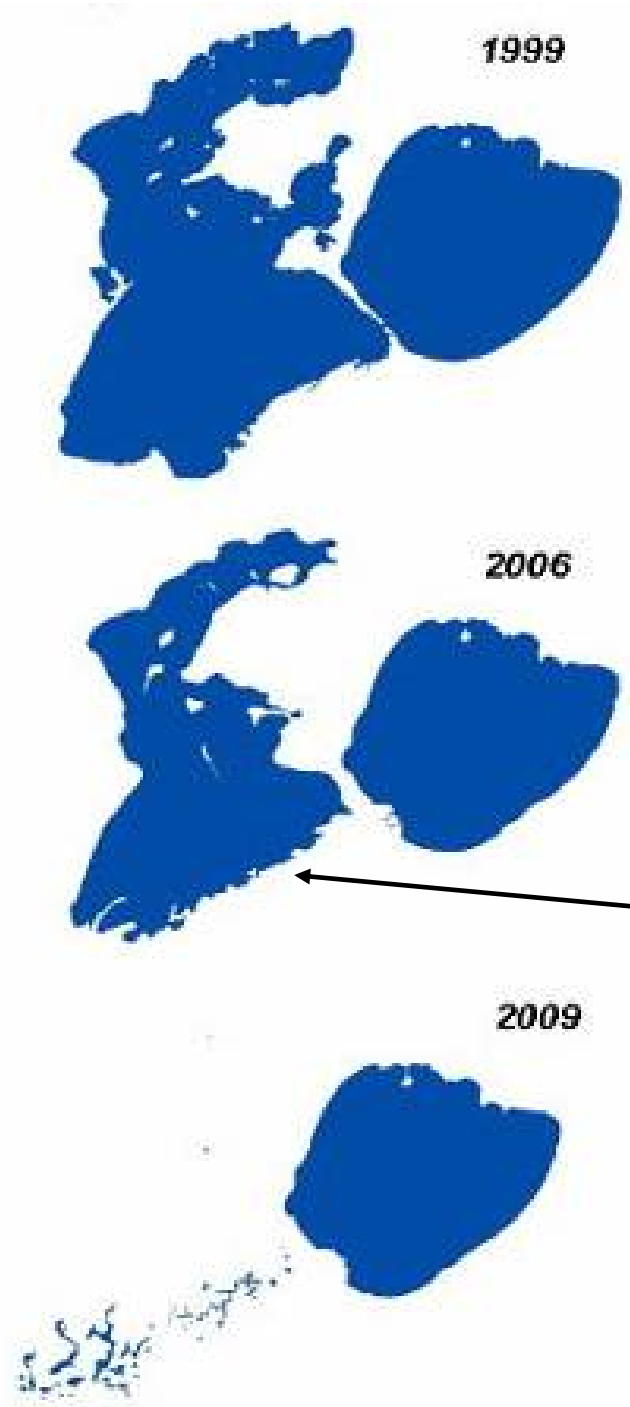
Image © 2005 EarthSat
Image © 2005 DigitalGlobe

© 2005 Google



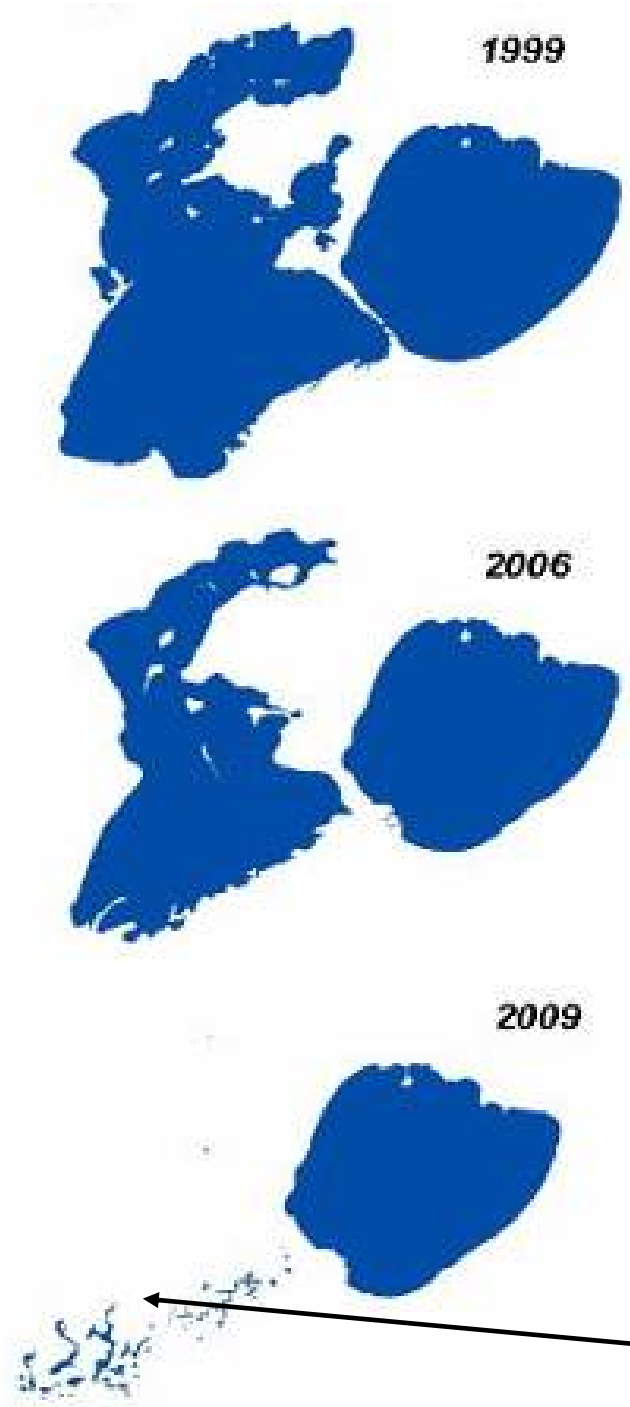
Mid-term climatic cycles about 30 years duration with alternation of periods of about 15 dry years and 15 wet years have great influence to wetlands and waterbirds of Dauria. During 2000-2012, 97% of wetlands become dry.



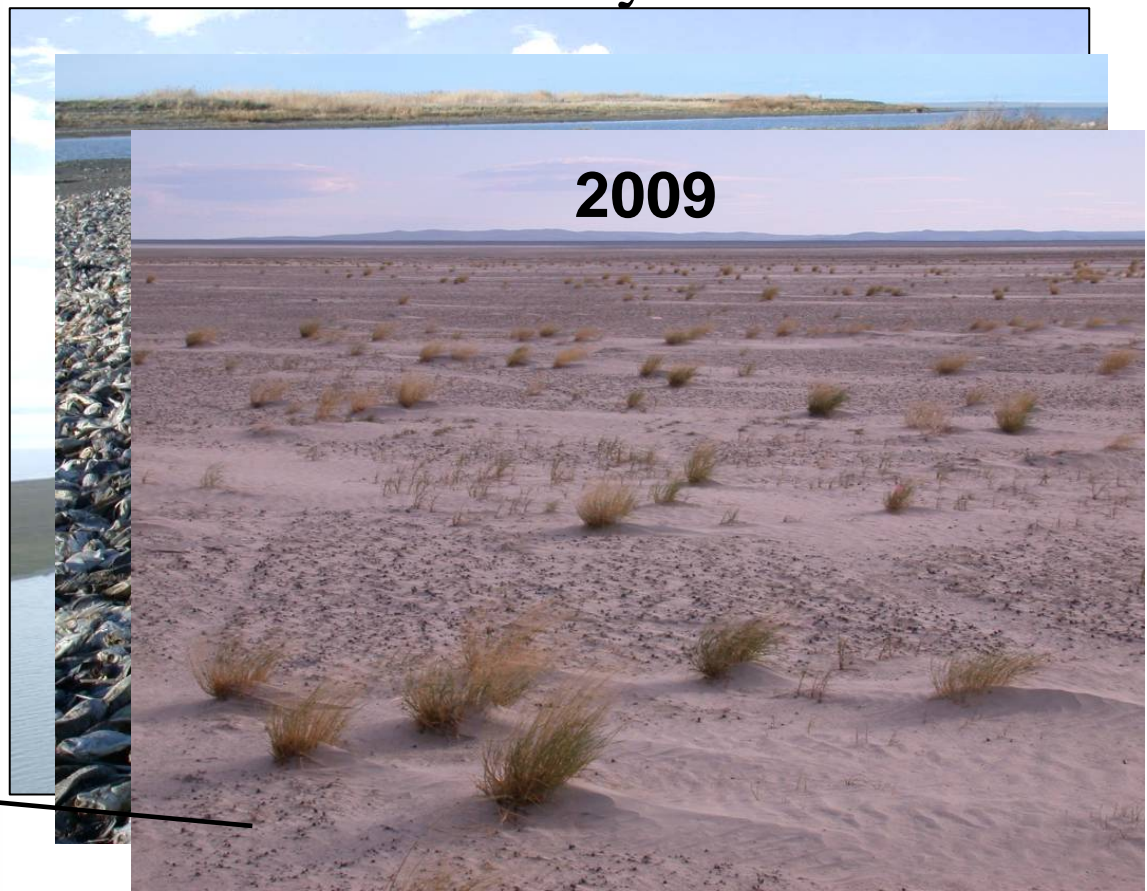


Mid-term climatic cycles about 30 years duration with alternation of periods of about 15 dry years and 15 wet years have great influence to wetlands and waterbirds of Dauria. During 2000-2012, 97% of wetlands become dry.





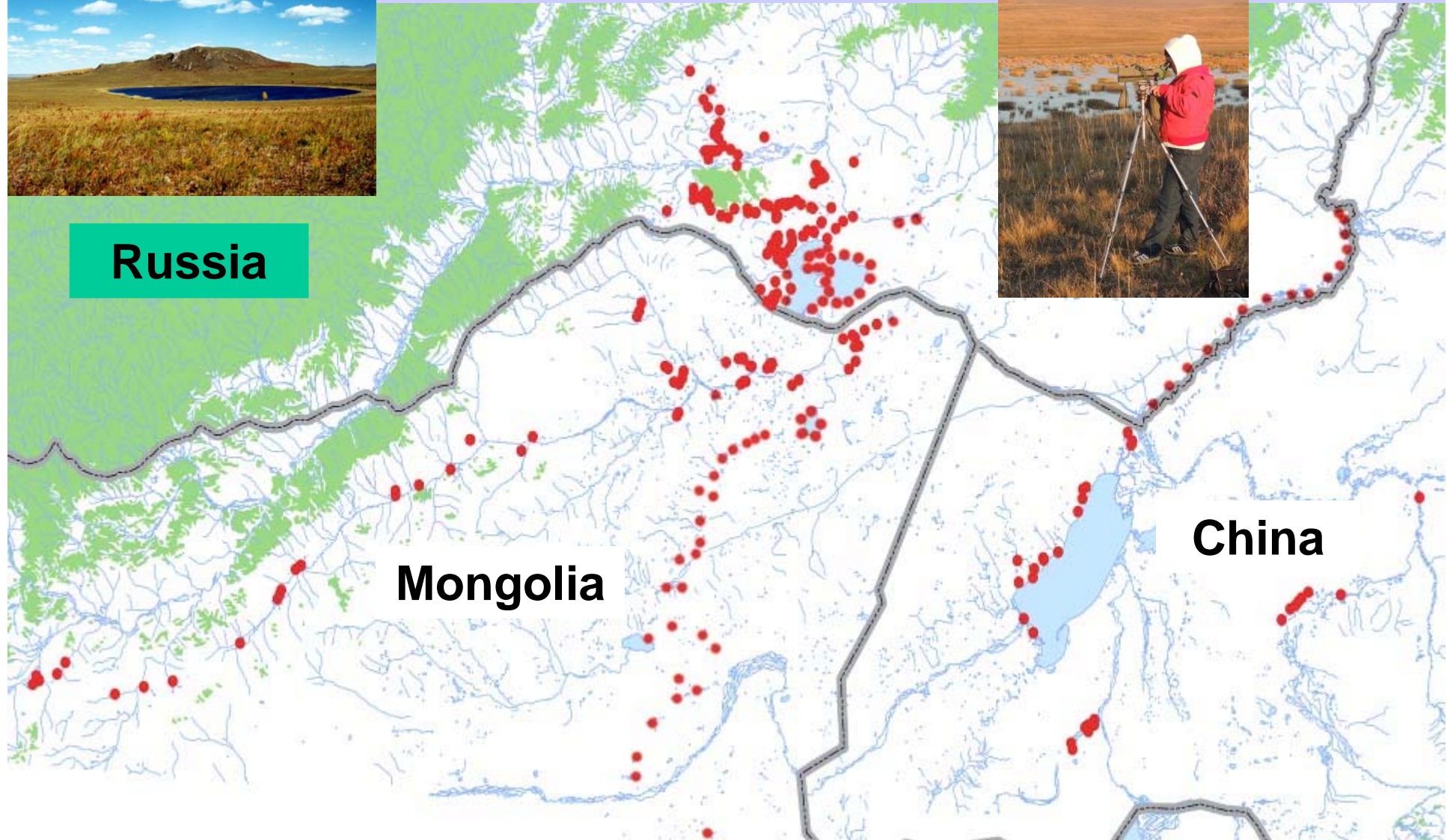
Mid-term climatic cycles about 30 years duration with alternation of periods of about 15 dry years and 15 wet years have great influence to wetlands and waterbirds of Dauria. During 2000-2012, 97% of wetlands become dry.



In 2010, we started to established Dauria Transboundary Monitoring Network. Now, it includes more 250 lakes and rivers within big area around the DIPA.



Russia



Results

(the Monitoring Networks helps):

- Conservation and monitoring of cranes outside of DIPAs;
- Conservation and management wetlands outside of DIPAs;
- Good relationship with local people;
- Monitoring of crane populations on the EAAF.

No important threats on territory of the strictly protected DIPA, but a lot of threats on the not-protected wetlands located around the DIPA



No important threats on territory of the strictly protected DIPA, but a lot of threats on the not-protected wetlands located around the DIPA



No important threats on territory of the strictly protected DIPA, but a lot of threats on the not-protected wetlands located around the DIPA



Disturbance

Birds cannot breed there



We made personal (face to face) work with people living near important wetlands. We involve people to conservation of cranes and wetlands.

Results:

- 1. good cooperation with local community;**
- 2. conservation of cranes around DIPA.**

Thank you for your attention!

