

# MPA network in Japan

## in case of shorebird habitat

Key message ;

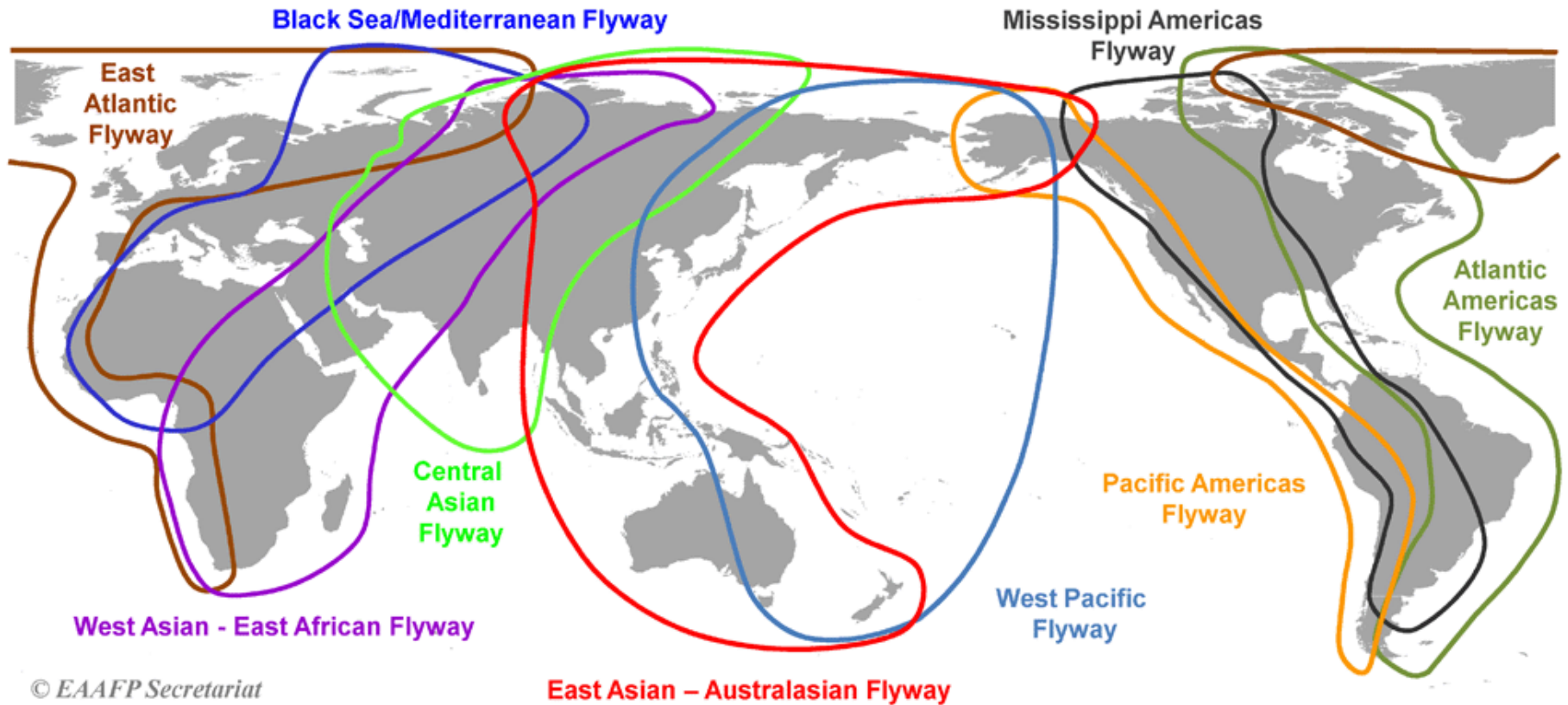
To develop the practical and useful network, it is necessary to

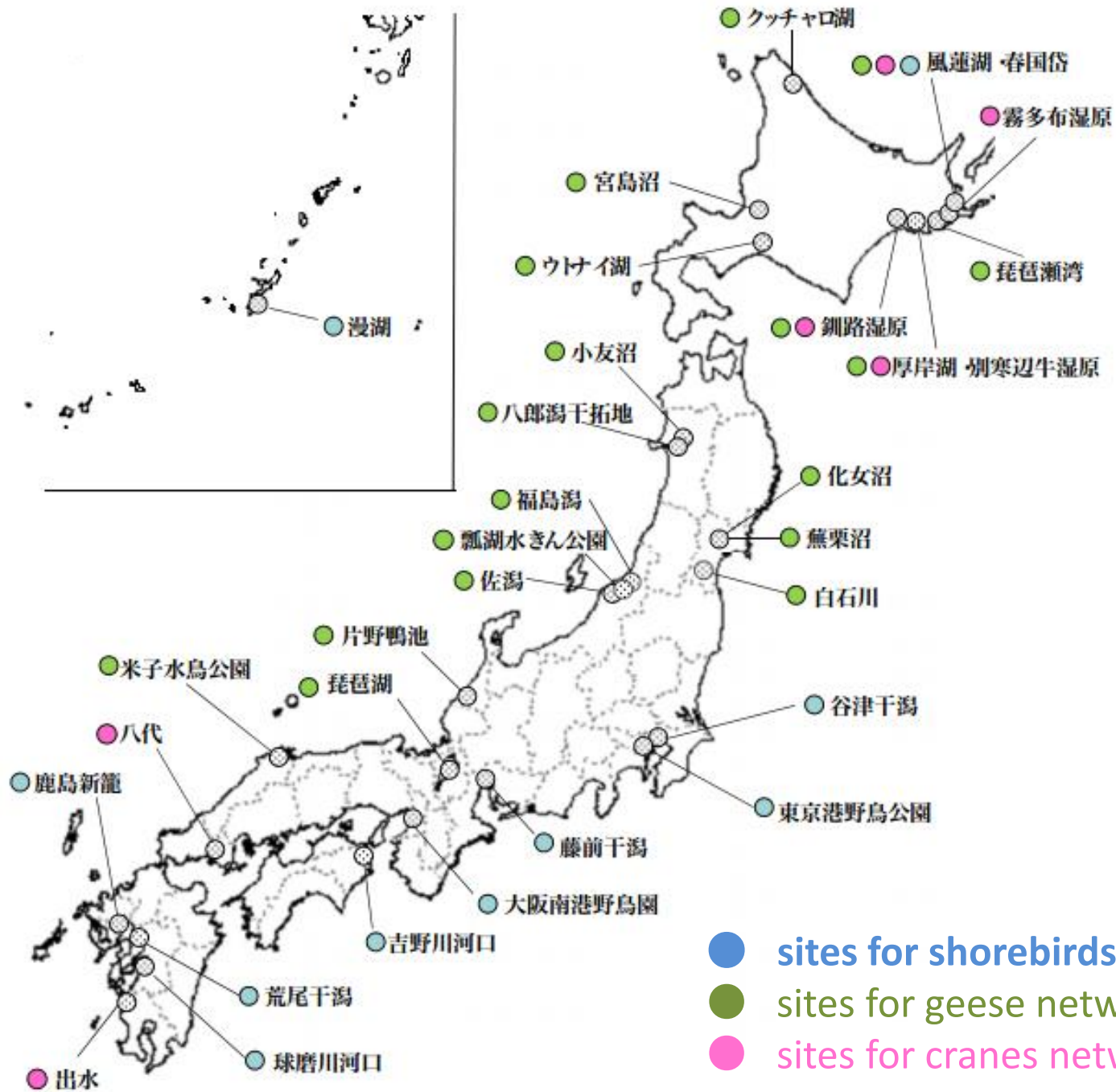
- identify the commonalities among the network members
- Identify and focus the typical, concrete and timed purpose of the network



# EAAFP

Partnership for East Asian- Australasian Flyway





To provide LG the incentive to shorebird conservation....

- need to know the status of shorebird
- need to know the habitat (tidal flats ) situation
- good to know EAAFP
- understand the importance of their own tidal flat

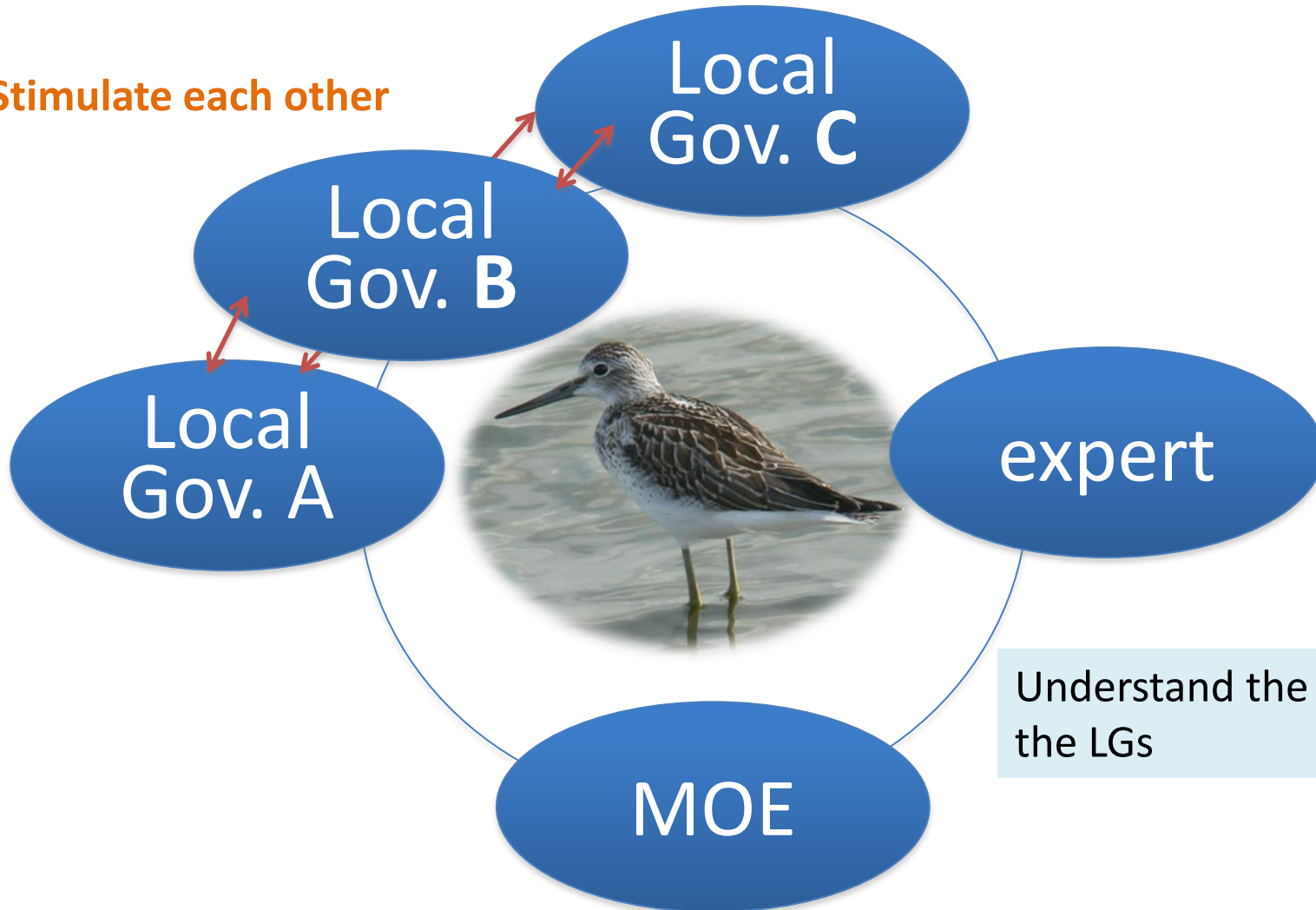


- good to know the experiences at other sites on shorebird conservation
- share the problems and good experiences.
  - get ideas of future conservation of their tidal flat
  - develop the relationship among the people of grass-route level ( level of site management responsibilities).

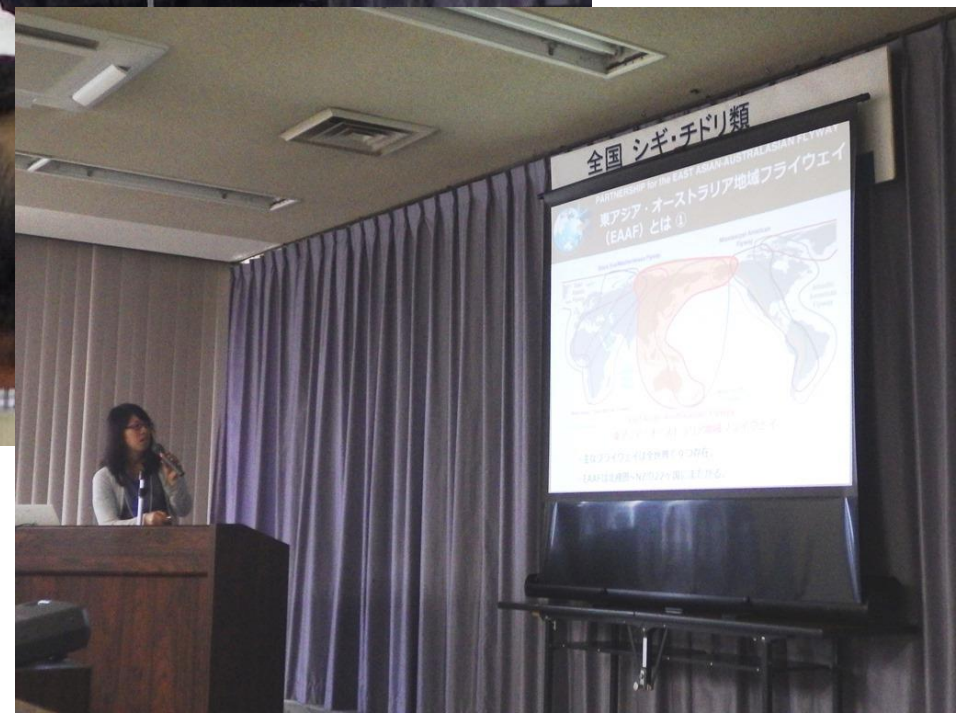
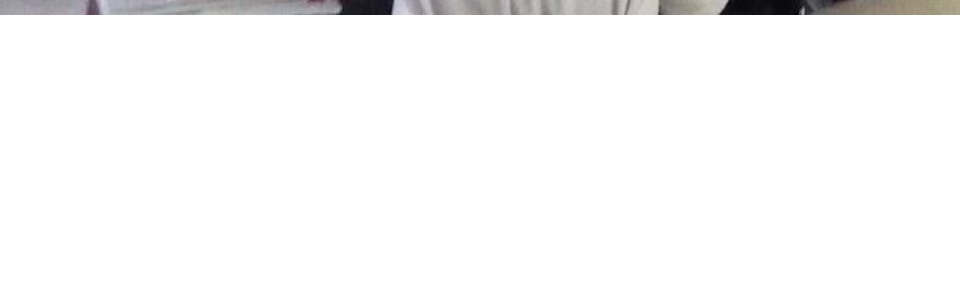
→ Joint Learning Programme

Learn the situation of shorebird and its habitat

Stimulate each other



Understand the situation of the LGs





### 鹿島市干潟展望館

〒849-1323 佐賀県鹿島市大字音成甲4427-6-2階  
TEL 0954-63-1723 E-mail : tenbou@po.asunet.ne.jp



概要  
 開館時間: 午前9時～午後5時 休館日: なし  
 開業: 平成3年 (道の駅登録は平成6年)  
 延床面積: 342㎡(道の駅鹿島内に位置する)  
 来場人数: 53000人(平成23年)  
 管理: 鹿島市(市商工観光課)  
 指定管理者: 鹿島市七浦地区振興会  
 職員: 2名 (うち1名非常勤)



ミニ水族館(常設生体展示10種)



ワークショップ



自然教室









全国 シギ・チドリ類  
ネットワーク交流会 in 鹿島  
主催 環境省 共催 鹿島市



A man in a white short-sleeved shirt and dark trousers is standing and speaking into a microphone. He is positioned to the right of the chalkboard and to the left of the sticky note board.

A woman in a bright orange long-sleeved shirt and grey pants is standing near the chalkboard, looking at a document she is holding.

A group of about ten people are seated at long wooden tables arranged in a U-shape. They are mostly men, some wearing light-colored shirts, and are looking towards the speaker. The tables are cluttered with papers, water bottles, and other items.

A woman with long dark hair, wearing a light green t-shirt, is seated at a table on the right side of the room, looking down at something in her hands.



Key message ;

To develop the practical and useful network, it is necessary to

■ identify the commonalities among the network members

→ **very important habitats of the shorebird under the same flyway**

■ Identify and focus the typical, concrete and timed purpose of the network

→ **remind the importance of their tidal flats and the EAAFP for this time**

→ **the purpose of next meeting is under consideration reflecting the LG's situation and needs**